

ÖREBRO

ILS z or LOC z RWY 19

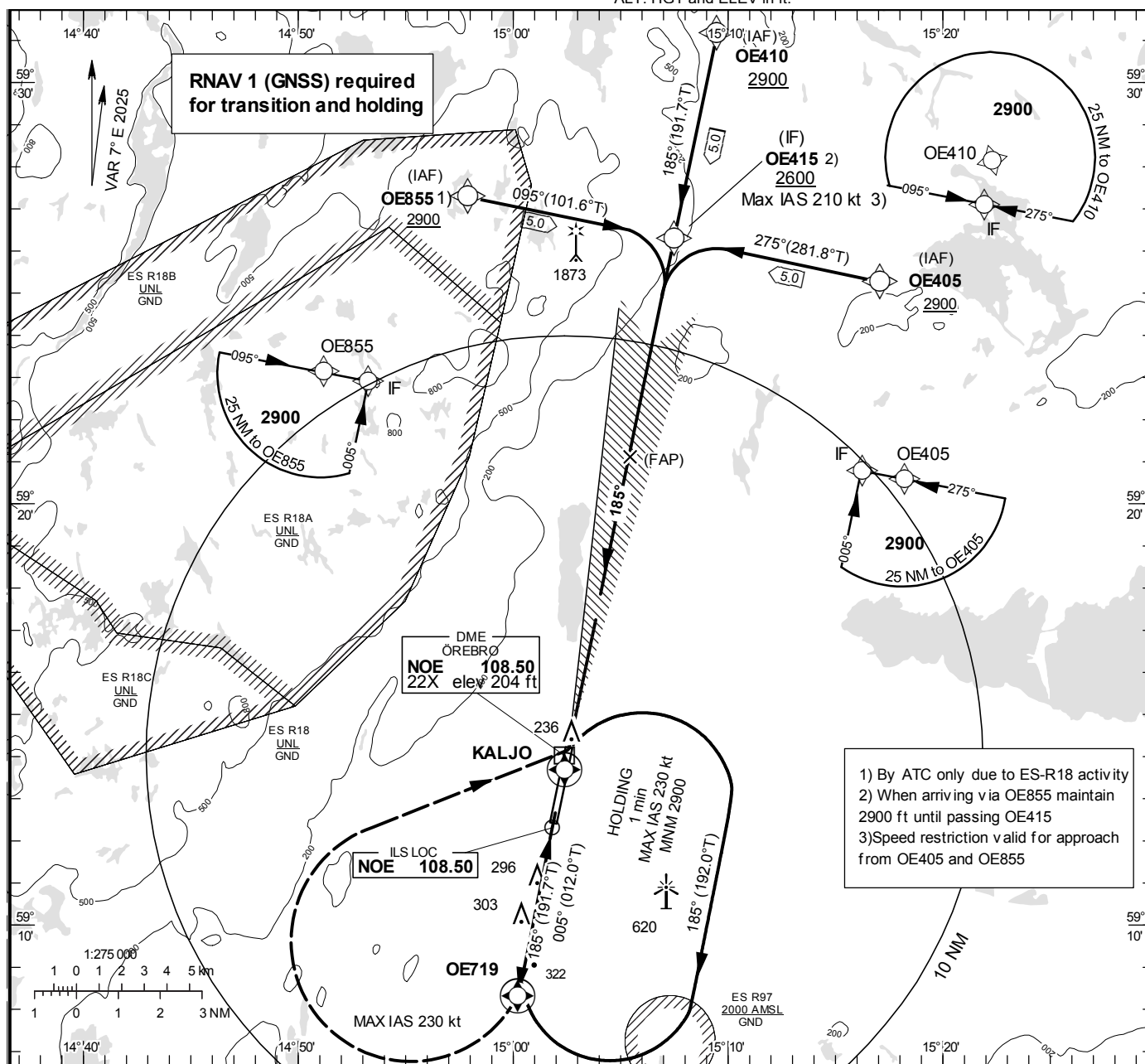
ÖREBRO TOWER

120.280

THR ELEV 191.1 ft, AD ELEV 192 ft

OCH are related to THR.
Circling OCH are related to AD ELEV.
BRG are MAG
ALT, HGT and ELEV in ft.

INSTRUMENT
APPROACH
CHART – ICAO



| | | | | | | | | | | | | | | | | | | | |
|--|-------|-----------|-----------|------------|-----------------------|-----------|-----------------|--|--|--|------|------|------|------|--|-----|--|--|--|
| TA 5000 ft AMSL | | | | | RDH 54.1 ft | | | | | *Timing not authorized for defining the MAPt | | | | | | | | | |
| MAX SPEED within missed approach turn 230 kt IAS | | | | | * No turn before MAPt | | | | | | | | | | OM replaced by NOE DME 4.0 MM replaced by NOE DME 0.8 | | | | |
| <div>CLIMB STRAIGHT AHEAD TO OE719, TURN RIGHT (MAX IAS 230 kt) TO KALJO CLIMBING TO 2900.</div> <div>LOC FAF at NOE DME 7.6 2600 MAPt at NOE DME 0.5 Descent grad. 5.2%</div> | | | | | | | | | | | | | | | | | | | |
| OCA (H) | | | | | | | | | | Final approach | | | | | LOC Distance FAF-MAPt 7.1 NM* | | | | |
| Cat of ACFT | | A | B | C | D | DL | NOE DME NM | | | 2 | 3 | 4 | 5 | 6 | 7 | | | | |
| Straight-in Approach | Cat I | 354 (162) | 361 (169) | 373 (181) | 383 (191) | 387 (195) | ALT | | | 820 | 1140 | 1460 | 1780 | 2100 | 2420 | | | | |
| | LOC | 570 (380) | | | | | GS | | | kt | 80 | 100 | 120 | 140 | 160 | 180 | | | |
| Circling | | 600 (410) | 690 (500) | 1020 (830) | | | Rate of descent | | | ft/min | 425 | 535 | 635 | 745 | 850 | 955 | | | |